

## LX

### Desk

ETC ION with universal fader wing (20 faders)

- 72 Dimmers
- Chilli Pro 2410i

### Lanterns

9 x 1.2k Fresnel Selecon Rama  
9 x 650w Fresnel Selecon Acclaim  
11 x 1k Flood Selecon LUI  
5 x ETC Source 4 zoom 25-30 ETC  
4 x ETC Source 4 zoom 15-30

6 x ETC Source 4 Jr.  
16 x Chauvet Colorado-1 Quad Zoom LED Tour  
4 x Chauvet Rogue RH1 Hybrid moving head  
4 x Mac 101 LED Moving Head Wash

## Sound

Mixer x32 Behringer Digital  
Denon CD/MP3 player D4500

3 x 500 watt 12in full range speaker RCF  
Acustica  
1 x Sub JBL 4645c

3 x Crest amplifiers  
16 in 8 out digital snake  
Analogue stage box

### Monitors

2 Wharfdale Pro Active floor monitor

2 Wharfdale Pro Passive floor monitor

### Microphones

6 x Shure SM58  
5 x Shure SM57  
4 x Sennheiser E614  
3 x Sennheiser E604

1 x Sennheiser D112  
6 x EMO DI box  
4 x EWG Radio Microphones Sennheiser

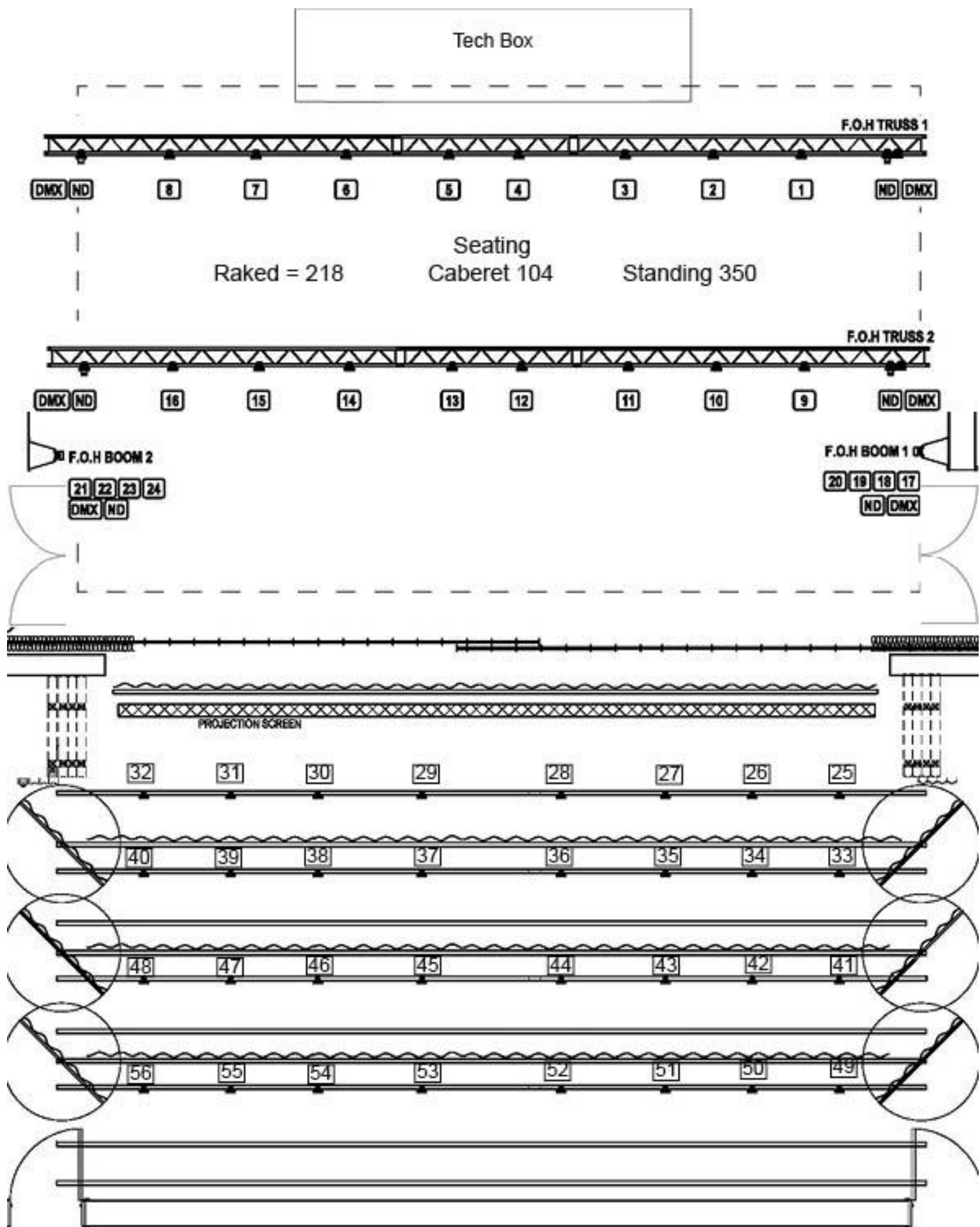
### Comms

8 x Tech Pro headsets and beltpacks

## Additional Equipment

- Magnum 2000 Haze Machine
- Portable Projector
- Show Relay and paging Equipment
- Infra Red System including 6 receivers

Please note in order for us to sustain high quality of equipment there will be a charge to hirers for use.



Stage (performing) area: 12.4m wide (9.25m with wings) by 6.025m long  
 Whole auditorium (including stage): 12.4m wide by 16.925m long  
 Main seating area: 12.4m wide by 10.9m long